
Untermairhof
Fam. Aschbacher
39030 Mühlwald
ITALY

Tel.+Fax: + 39 0474 65 31 33
Mail: untermairhof@dnet.it
Web: www.untermairhof.com

APARTMENTS UNTERMAIRHOF

- Außermühlwald, community of „Mühlwald“; 1150 m above sea-level
- Apartments with connected farm (dairy farming)
- Different domestic animals: cows, calves, goats, cats, dogs, donkey...
- Large play and sunbathe-ground, sandpit, slide, swing, fireplace...
- Workshop with different tools for woodworking;
- Playing room with ping-pong and table football

LOCATION OF THE HOUSE

- 150 m away from the main road; nice driveway
- Distance to the next restaurant/pizzeria 1km (10-15 min to walk)
- 2 km to „Mühlwald“ with 2 shops, 1 butcher, post office, tourist office, tennis court
- 5 km to „Sand in Taufers“ with pharmacy, covered court, doctor, outdoor swimming bath, rafting, climbing school, disco, bowling alley
- Indoor swimming bath with Wellness Area at Reischach-Bruneck – 20 km

WINTER SPECIALS

- Toboggan run next to the house
- Tamarix (cableway 280m) for skiing and sledging – 1 km
- Cross-country ski run – 1 km
- Ice-skating in the sport and recovery center of „Mühlwald – 2 km
- Ski resort „Speikboden“ (8 km), ski resort „Klausberg“ (12 km), ski center „Kronplatz“ (18 km)

HOW TO ARRIVE

- Coming from Innsbruck/Austria cross the pass „Brenner“, Highway A22 - exit „Brixen-Pustertal“; follow the indications in the direction of „Bruneck“ (30 km), exit „Bruneck west“ at the roundabout follow the indications for „Ahrntal - Sand in Taufers“ until „Mühlen in Taufers“ (12 km); at the beginning of the village, after the village turn left and follow the indications for „Mühlwald“. After 5 km you will find us on your right.
 - Navigation System
„Aussermühlwald 166, 39030 Mühlwald“
-
-

SPECIAL SERVICE

- If wanted we offer fresh milk and bread from the bakery every morning (no bread on Sundays)
- Sledges are available without paying any fee
- Ski-deposit with ski-boot dryer

PRICES

for apartments up to 4 persons

High season Daily price per 2 person August / from December 25 to January 06	48 €
Low season Daily price per 2 person	35 €
for any further person per day	5–8 €
1 dog per day (allowed only in the low season)	5 €
Prices for the large apartment for 10-20 persons (farm house) Daily price per person (including all additional costs)	9–11 €

- Children up to 4 years do not pay anything
- Prices include: towels, bed linen, electricity, heating, garbage collection, taxes ...
- In case the apartment is left in good condition (kitchen ware put in the right place, garbage bins emptied, bed linen taken off) we do not charge anything for cleaning..

OUR OFFER

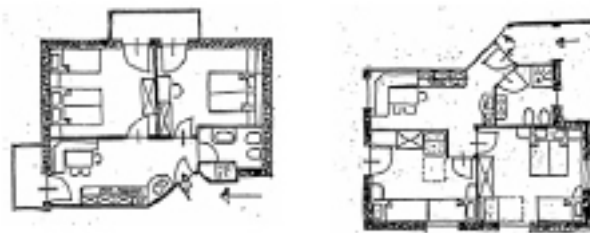
Ground floor: 2 apartments for 4-6 persons with terrace

1st floor: 2 apartments for 4-6 persons with balcony

2nd floor: 2 apartments for 4-6 persons with balcony

Each apartment consists of:

- 1 well equipped kitchen
- 2 bedrooms
- 1 bathroom
- TV, telephone, coffee machine
- Size of the apartments: 45-50 m²



WE ARE LOOKING FORWARD TO WELCOME YOU!
